




Directing our energies for you.

- Xpol for **WiMAX** Networks
- Variable E-Tilt & Remote Azimuth Steering Capability
- Optional Integrated/Field Replaceable TMA & BIAS-T to Reduce RF Cable
-  2.1 Compliant with Azimuth Steering Extension

CSS-XS4-65-RA

Xpol Variable E-Tilt Antenna with Azimuth Adjustment

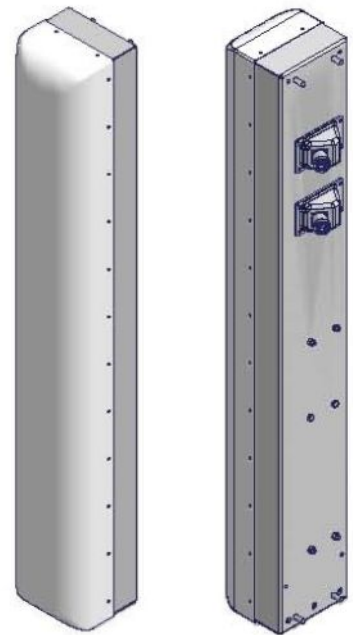
Two-Way



Field Adjust E-Tilt & +/- 30° Azimuth

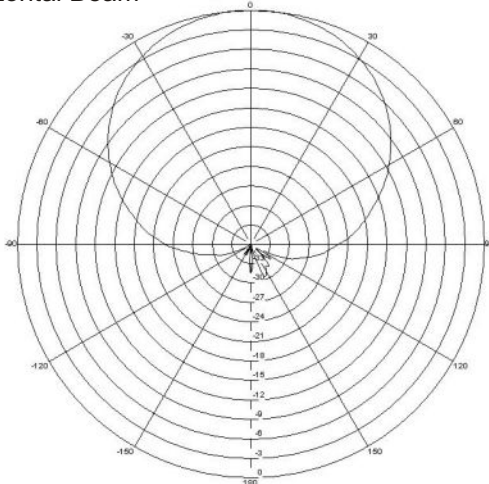
Electrical Specifications

Frequency Band	2496-2690 MHz
Gain	17.8 dBi
Horizontal Beam (1/2 power)	65°
Vertical Beam (1/2 power)	5.2°
Variable Field Adjust Electrical Downtilt	0° to 20°
Remote Azimuth Steering	+/- 30°
VSWR (maximum)	1.40:1
Port to Port Isolation	>27 dB
Front-to-Back Ratio	>28 dB
Upper Side Lobe Supp.	>18 dB
Polarization	+/- 45° X-pol
Impedance	50 ohms
Power Input Rating (per port)	200 CW
Intermodulation (2x20w)	typ.-150 dBc

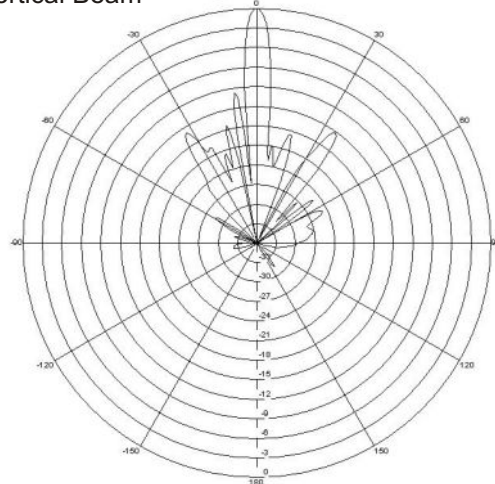


65° Horizontal Beam
5.2° Vertical Beam

Horizontal Beam



Vertical Beam





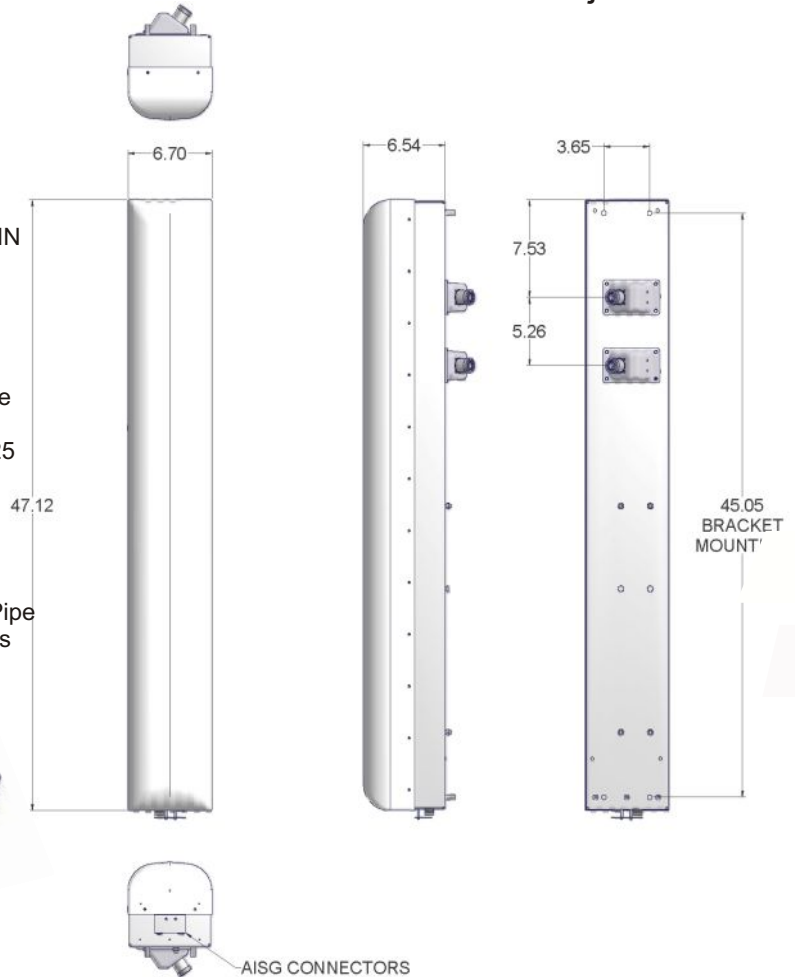
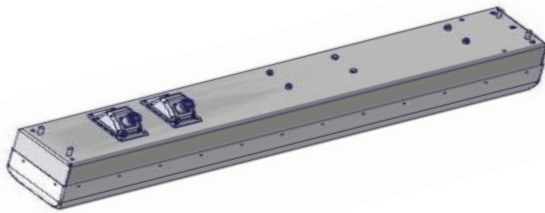
Directing our energies for you.

CSS-XS4-65-RA

Xpol Variable E-Tilt Antenna with Azimuth Adjustment

Mechanical Specifications

Input Connectors (female)	Two Back Mounted 7/16 DIN
Antenna Dimensions	47.1 x 6.7 x 6.5 Inches
Antenna Weight	20.4 lbs
Bracket Weight	14 lbs
Dual TMA Weight	16.5 lbs
Lightning Protection	Direct Ground
RF Distribution	Printed Microstrip Substrate
Radome	Ultra High-Strength Luran
Weatherability	UV Stabilized, ASTM D1925
Radome Water Absorption	ASTM D570, 0.45%
Environmental	MIL-STD-810E
Wind Survival	150 mph
Front Wind Load at 100 mph	63.5 lbs
Front Flat Plate Equivalent	1.35 sq-ft. (c=2)
Mounting Brackets	Fits 2.5 to 3 Inch Sch. 40 Pipe
Clamps/Bolts	Hot Dip Gal. Steel/Stainless



Antenna Order #'s	Descriptions
CSS-XS465RA-8	Xpol Antenna with RET for Vari E-Tilt 0 to 8° & Az Orientation Adj. and fixed mounting bracket
CSS-XS465RA-14	Xpol Antenna with RET for Vari E-Tilt 6 to 14° & Az Orientation Adj. and fixed mounting bracket
CSS-XS465RA-20	Xpol Antenna with RET for Vari E-Tilt 12 to 20° & Az Orientation Adj. and fixed mounting bracket
MDT-9	Mechanical Downtilt Bracket (tilts 0-9 degrees)

Kit Order #'s
 (kits include factory installed & tested AISG & RF jumpers assembled & weather sealed)

CSSK-DTMA-XS465RA-zb	Xpol Antenna with RET & Dual TMA ("zb" specifies max E-Tilt & freq. band)
CSSK-BIAST-XS465RA-z	Xpol Antenna with RET & Top BIAST ("z" specifies max E-Tilt)

z= either 8, 14 or 20 to specify antenna maximum E-Tilt range in degrees"

b= either AB, BC, CD, EF, FH or HG
 to specify "Dual TMA Frequency Range where:"

AB=2502.0-2535.0 MHz	EF=2624.0-2657.0 MHz
BC=2518.5-2551.5 MHz	FH=2640.5-2673.5 MHz
CD=2535.0-2568.0 MHz	HG=2657.0-2690.0 MHz