

DBHB20 Booster

Technical Information

Integrated Home Booster for In-building Coverage

Home Booster DBHB20 is a dual band cost effective solution for homes and small offices. Available in full band and operator specific bands, the DBHB20 is a complete "Do It Yourself" kit. Designed to match the interior décor, the booster enhances coverage in areas up to 500 Sq. meters/ 5,000 sq.ft.



Salient Features

- Compatible with GSM, CDMA, iDEN and WCDMA technologies.
- Available for SMR 800 / Cellular 850 / SMR 900 / GSM 900 / DCS 1800 (60MHz bandwidth) / PCS 1900 / UMTS frequency bands in the following configurations : GSM 900 + DCS 1800 / GSM 900 + UMTS / Cellular 850 + PCS 1900 / SMR 800 + SMR 900.
- Designed for indoor applications
- Conforms to ETSI & FCC standards.
- Compatible with frequency hopping BTS
- APC (Automatic Power Control) for maximal linear output power.
- Low power consumption.
- Compact size and light weight
- Do -It- Your self quick installation kit.

Model No

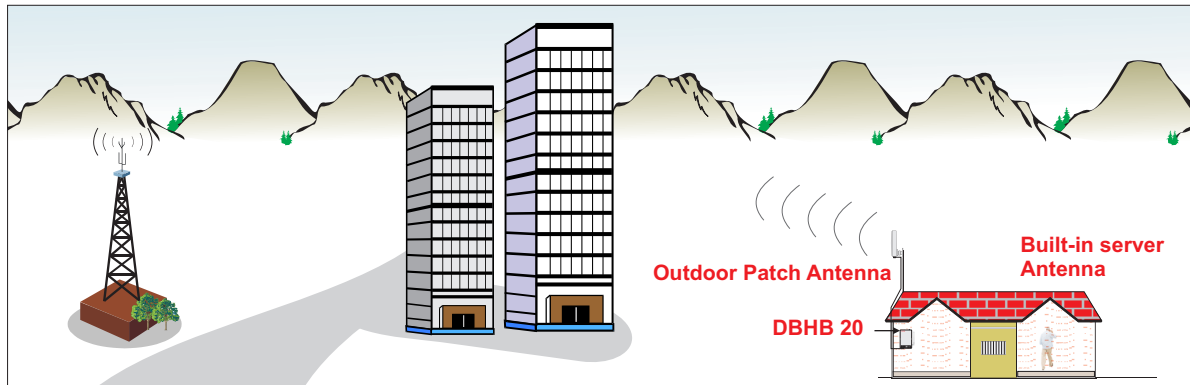
DBHB20

Specifications

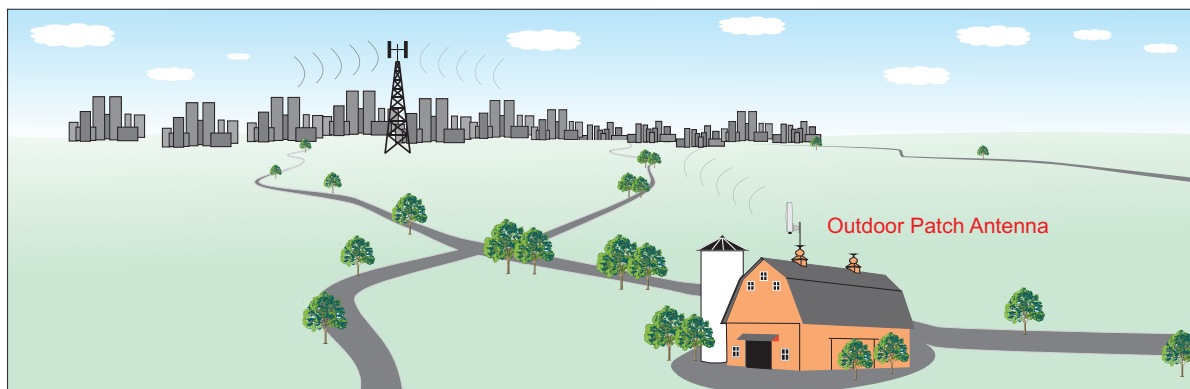
Gain	65 dB
Output RF Power (Composite)	+ 10 dBm Max.
IMD & Spurious Emission	<-36dBm @ 9KHz-1GHz <-30dBm @1GHz-12.75GHz
Noise Figure	8dB Max.
V.S.W.R.	1.5 Max.
Power adapter (9V DC, 3.3 Amp.)	AC 100-240 V AC, 47/63 Hz
Power Consumption Approx.	24 watts
RF Connector	N Type (F)
Dimensions (WxDxH) Approx.	134x216x58 mm (5.3x8.5x2.3 inches)
Weight Approx.	2.9 Kg. (6.4 lbs)
Operating Temp. Range	-5°C to +55°C (+23°F to +131°F)

DBHB20 Booster

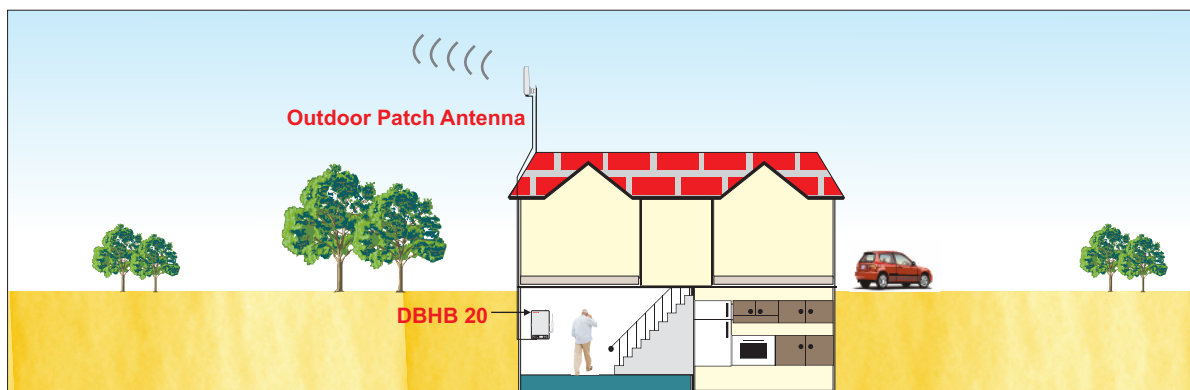
In-house coverage improvement through Home Booster installation



Farm House



In Basement



Shyam Telecom Ltd.

246 Udyog Vihar, Phase IV, Gurgaon, India
Tel: +91 124 4311600, Fax: +91 124 4018116

Shyam Telecom Inc.

6 Kilmer Road, Suite D, Edison, NJ 08817, USA
Tel: +1 732 985 1324, Fax: +1 732 907 1023

Shyam Telecom GmbH

Frohsinnstrasse 16, D-63739 Aschaffenburg
Tel. +49 6021 45 90 10, Fax: +49 6021 45 90 129

E-mail : contact@shyamtelecom.com